

الموازنة العامة الفلسطينية
من حيث توازنها
إزاء النوع الاجتماعي

معهد أبحاث السياسات الاقتصادية الفلسطيني (ماس)



٢٠٠٥

()

1994

()

✧

✧

✧

✧

✧

✧

() () () () ()

()

2005 ©

2426 . . . 19111 . . .

info@mas.org.ps : 2987055 : 2987053/4 :

<http://www.mas.org.ps> :

-

:

:

:

:

()
()

:

IDRC -

:

()

2005

()©



()

()

IDRC -

1			-1
6			1-1
7			2-1
10			-2
10			1-2
14		(FISCAL POLICY)	2-2
23			3-2
26			<i>1-3-2</i>
30			<i>2-3-2</i>
34			<i>3-3-2</i>
35			<i>4-3-2</i>
38			<i>5-3-2</i>
43		-	<i>6-3-2</i>
45			<i>7-3-2</i>
49		:	-3
49			1-3
49		:	2-3
	<i>2000</i>		<i>1-2-3</i>
53			
		-:	3-3
56			
58			<i>1-3-3</i>
60			<i>2-3-3</i>
63			<i>3-3-3</i>
65			-4

65		1-4
	<i>2003</i>	<i>1-1-4</i>
69		
72		2-4
74		3-4
75		<i>1-3-4</i>
79	<i>(2005 - 2002)</i>	<i>2-3-4</i>
82		<i>3-3-4</i>
	:	4-4
87		
92		-5
92		1-5
99		2-5
102		
108		

62		:1
78	2004	:2
	()	:3
81	2004	
83	2005 – 2002	:4
84	2005	:5
		:6
89		

64	2003	:1
		:2
64		2004
		:3
86	() 2004-1995	

“People-centered
UNDP
%20
“20/20
%20
Budgets”

.
-
-- -

.(Tiwari, 1999)

1995

(Gender Mainstreaming)

“Gender Neutral” "

.(Gender Blind)

-(Gender Inequality)

(2001)

"

"

.()

()

(Gender-Sensitive Budgets)

. / /

(Cagatay et al., 2000, p. 14)

" :

"

1995

Elson Budlender et al. 1998

)

(1) :

(1999

(3)

(2)

(4)

(Elson 2000b) .

2002

"

"

:

%50

- -

1-1

(1) :
2005-1994

(2) .

()

"

"

:

"

2-1

:

()

◇

◇

◇

2005

:

2001

-
(Ngwira, 2002, p 138

-
(Budlender, 2002, p. 181)

()

-2

1-2

:)

.(UNCTAD and UNDP,2002; IMF,2003; and Bridge 2003

()

Gender Gap

:

(Fiscal Policy)

2-2

.(2002)
1999)

:(

:

◇

:

◇

:

◇

:

◇

:

◇

:

◇

:(2002)

:

◇

:

◇

∗

:

.1

.2

.3

.(Tiwari, 1999)

- -

" "

" "

(UNDP)

.(Cagatay et al., 2000)

."20/20 "

%20

%20

()

:

.(1998)

()

()

(Public Choice)

(Expenditure Structure)

.(2002)

)

()

.(

(Devarajan, Swaroop and Zou,1997)

43

()

)

(
(2002)

(Crowding out)

:(2000)

(physical capital)

✧

(Human Capital)

✧

✧

(Tax expenditure)

✧

(Rajkumar, 2002)

- -

:

:

.1

.2

.3

)

(

)

.(

%100

%100

.(1996) %100

- -

()

)

:(1996

:

.1

◇

◇

◇

.2

.3

.4

.5

.(Casaneira and Bird, 1992) "

"

:

3-2

“ ” “ ” “ ” “ ”

.(Bhagwati, 1985)

1990

:

- -

-

-

.(1998)

Empowerment

:

✧

✧

✧

✧

1-3-2

(2004)

- -

:

.1

.2

.3

: (UNIFEM, 2001)

.1

.2

.3

.4

:

.1

.2

:

.3

.(

.4

" - (2001)

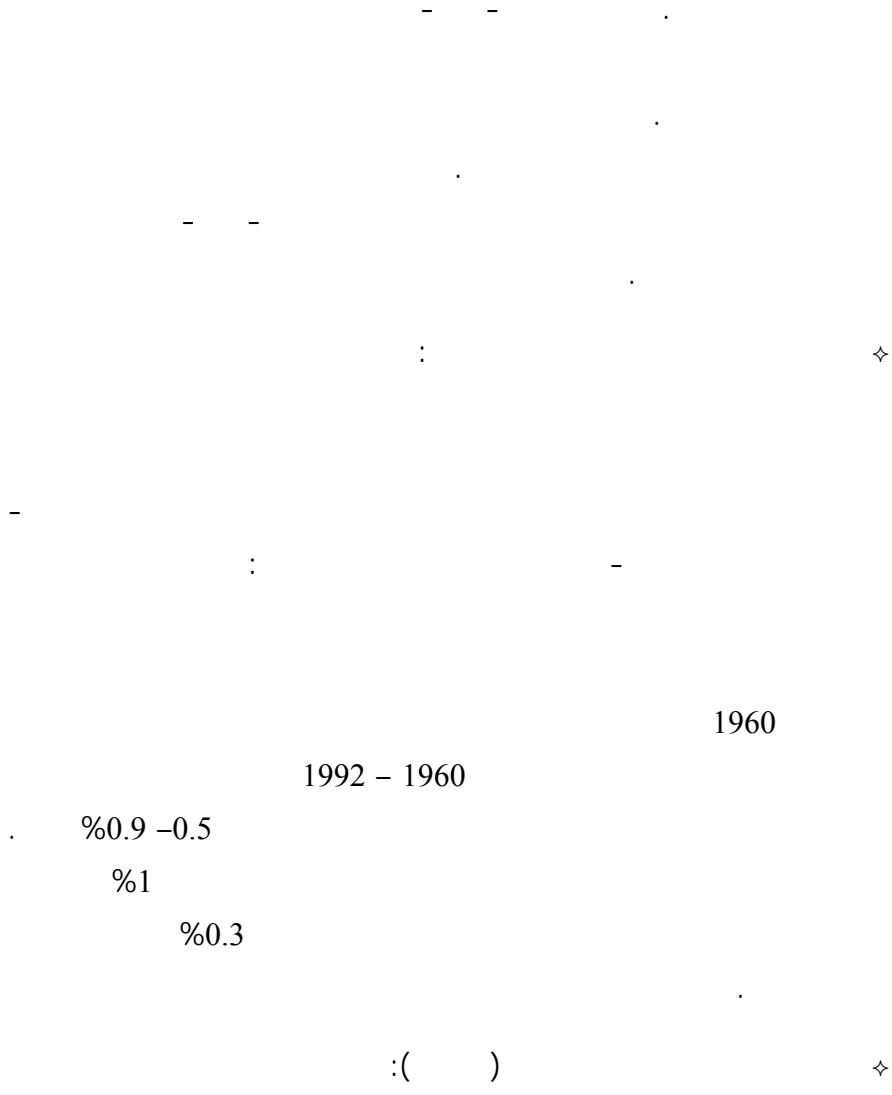
-"

:(Elson,2002, ;Elson 2000; and, Klasem 1999)

:

✧

(2002)



(1995)

:

.1

.2

.3

.4

:

- -

2-3-2

.(2004)

:

:

:

✧

()

:

✧

()

(...)

:

✧

()

(Balmori; Bridge,

.2003)

"

"

1995

Gender)

:

.(Women Budgets)

(Budgets

"

() GAD "

() WID "

Disadvantaged

GAD

.WID

:

(Budlender, 2002)

◇

◇

(%50 %50)

◇

◇

:

◇

◇

◇

3-3-2

- - - - -

(King, 2002)

-

(UNCTAD)

(UNDP)

"

-"

:

:

:

◇

◇

:

.

:

:

◇

◇

()

.

.

4-3-2

(Sarraf, IMF, 2003)

:

- -

✧

✧

✧

✧

✧

✧

)

.(

: (Budlender, 2002)

Gender)

:

(Analysis of Budgets

.(Gender Sensitive or Responsive Budgets)

(Cagatay et.al.,2000, p.46)

(1) :

(2)

5-3-2

(Elson&Evers,1997)

:

:

()

:

:

:

✧

✧

◇
◇
◇

:

(1) :

(2)

:

:

.(Gender Planning)

:

:

◇
◇

✧

✧

:

) (1) :
(2). (

(1) :
(2).

(3).

(1) :

(2).

(3).

:

.(Outputs)

Budlender,)

: (2002

✧

- -

. " "

%1

.%5

◇

◇

:(Budlender, 2000)

2000

(Budlender & Sharp 1998)

✧

✧

✧

✧

✧

:

:

:

.

:

:

- -

.

- -

:

:

.

:

:

.(Outputs)

:

:

.(Outcomes)

-

6-3-2

)

(4

:

◇
◇
◇

- -

:

◇
◇
◇
◇

7-3-2

50 (2001)

)

(Commonwealth

:

:

1984

1990

" " .
- - .1996-1994
Cagatay et.al.,2000,) .1996
" (p.40

"
:
:

1997

-(1999, p.1)

-
"

"

:
:

:

:

-3

1-3

93

:

2-3

:

67

✧

(1) :

(3)

(2)

20-15

(Hamed & Shaban, 1993)

%

✧

" "

✧

" "

%40

()

%85

◇

93

◇

"

"

"

"

%24

97- 94

%80

"

"

◇

"

"

◇

-

-

"

"

◇

:

"

"

"

"

◇

%25)

.(

8

"

"

"

"

94

◇

"

"

◇

52

2000

◇

" "

/

" "

◇

/

2000

1-2-3

2002

:

120,000

()

11-10

◇

"

"

%60

(5)

%22

.2000

◇

2002 - 2001

2002

()

◇

900

328

%50

40-35

500

250

2002,2001

%40

.1

2004,2003

%30

%10

.2

-: 3-3

%50.7	3,762,005	2005	
%63.1	.(100	102.6)	%49.3
(15		%36.9	
	. ¹	936	- 65)

%4.3	2003		
	%25.6 %13.6		%19.8

(2005

1

%60

(UNDP 2003)

%22-25

}

{2003-1996

%11-15

()

)

(1996)

.(

(%54.2)

%31.9

()

.2003

2

()

"
%37

"
2004

:1

		(2001)	
	1	42.1	
	2	55.0	
	8	31.8	
	22	6.1	
	44	0.0	
	90	0.0	
	102	*8.3	
	119	38.1	
	120	6.1	
	147	36.0	
) 177 (8.1	

()

:

2005

. 2005/2/24

*

2-3-3

)

(

1994

) %7
(93 7
%12 68
1727

319153
1715 %50
(%16 %84)
.(%17 %83) 542

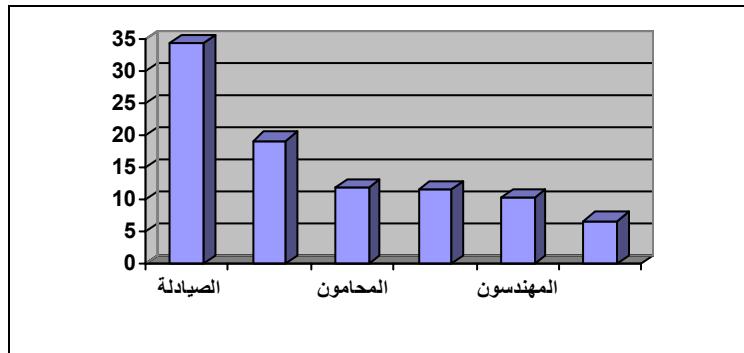
404644
(%49.5 %50.5)
912 (%16 %84) 2521
.(%18 %82)

%6 88
() %15

: (1)

2003

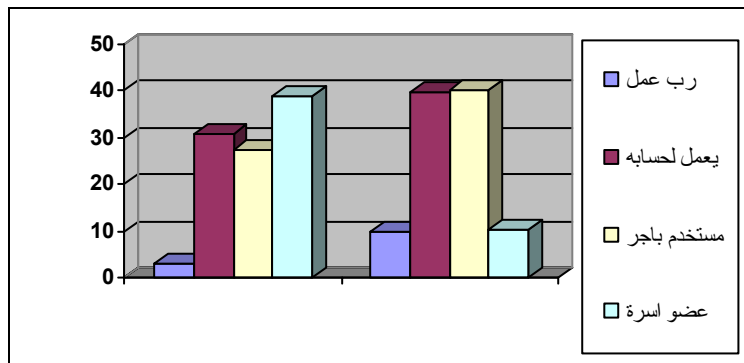
:1



(2)

:2

2004



()

(Satellite Accounts)

3-3-3

)-

-

(%65 %15

.(2005)

.
.
.
"
- " .
.
%32.4 %45.9
.

-4

1-4

:

1996

◇

.

◇

.

:

◇

.

.

.

.

(2001) %60

.2000 – 1995

(2002)

:

2000-95

1999

.1

23.7

2000

.2

(
%76

)

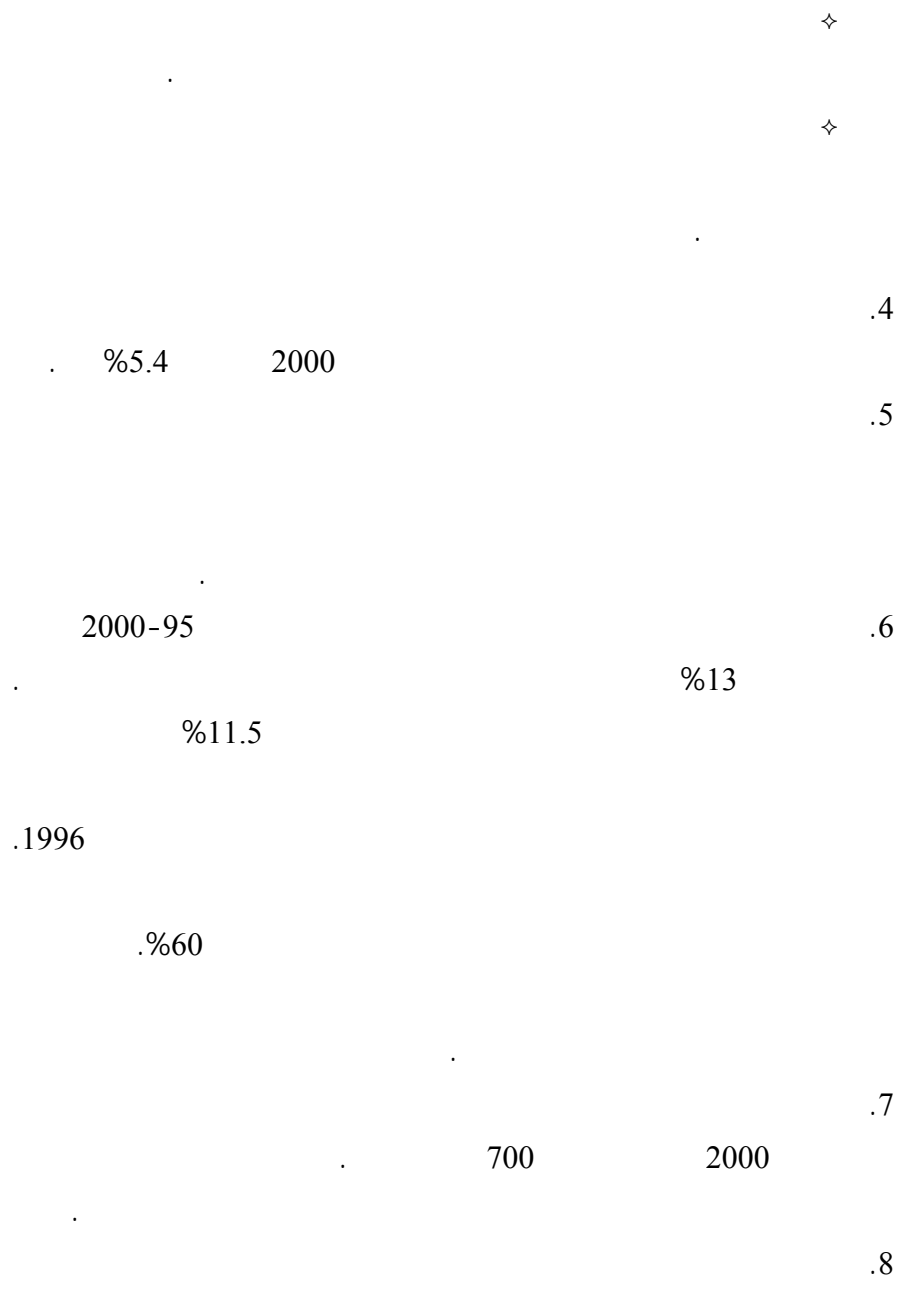
.3

%61

:(1999)

◇

◇



:

)

.1994

:(2002

1995

%12

:

◇

%17.3

1999-

.2002-1995

:

◇

.2002

%10

1995

%14

2002-1995

:

◇

.2002

%5

1996

◇

%2

- -

2002

2003

2003

1-1-4

:

◇

◇

◇

◇

◇

2003 :
%81 ✧
) .
30 ()
2002
3100 ✧
2003 ✧
2002 2001 ✧
.2003 ✧
509 2003 :
747 ✧
1071
71

65) (415) ✧
· %60 (

·
1.3 2002 ✧
80 872
· %39 2003 %

-
!!

2-4

60 · %

(35-30)
2003

- -

7.8 2001 - -

4 2002

27 2003

(2003) .

" "

155 2001

425 2003

852 1999

473 2001

261 2002

" "

2000 121

2002 755 2001

1266

1527 2000 973

%70 (%57) 2002

(2003) .

10

2000

.()

()

1527 973

%83

61

%93

(4) 2002

.2005-2004

3-4

"

.(2004) "

- -

1-3-4

%37

%29

%43

%59

%33

%36

%38

2004

:2

%43	%57	45654	19618	26036	
%29	%71	30430	8907	21523	
%37	%63	76084	28525	47559	

()

:

.2005

%58

2004

%26.2

130

100 1999

%77.8

76

(%80.5 %19.5)
%27.9 %38.5

%13.5 1999 %12.3

2004
.2000

%15.6

2004

%19.6

1999

%7

160

.1999

:

2005

%44.2

(2005)

9046386

2004

) 66.9

69

(

%62.2

%37.8

3.6 %96.1 ()
%0.3 (A, B, C) %
10.3 %96.1 (A4, A3, A2, A1)
%1.4 %

%89.1 %10.9
%17.1

%83.6

2006

12-1

2004

()
2004

:3

37	0	() A1
101	7	() A2
69	8	() A3
460	71	() A4
1244	161	A
1035	206	B
1500	359	C
1103	295	D
42082	27346	12-1
47631	28453	

() :

(2005 - 2002)

2-3-4

2005 - 2002

%21.6 %13.3

)

(

%60 -%50

%55

)
 2005 - 2002
 2002 %35.5
 2005 %40.9
 2005 %2.11 2002 %3.73
 2002 %1.23
 2005 %0.69
 %0.74 %1.08
 :
 2005 - 2002 :4

2005		2004		2003		2002		/
%		%		%		%		
%5.14	464590	%6.48	486206	%9.37	546950	14.72%	668,688	
%24.23	2191657	%27.19	2039556	%27.16	1585031	32.24%	1,464,762	
%23.56	2131575	%25.73	1930155	%27.29	1592431	8.74%	397,038	
%1.68	151737	%1.60	120167	%1.13	65807	1.42%	64,427	
%2.11	191121	%2.70	202400	%3.00	175099	3.73%	169,267	
%40.86	3696221	%33.27	2496073	%28.95	1689357	35.47%	1,611,635	
%1.68	152210	%2.14	160347	%2.23	129901	2.60%	118,284	

%0.74	67271	%0.89	66588	%0.88	51433	1.08%	49,174	
%100	9046386	%100	7501493	%100	5836012	%100	4,543,275	

.2005

%91

) 2004 %37.5
.(2004

: 2005

2005

:5

464590	14577	450013	48710	167701	012336		
2191657	45007	2146649	114244	315803	1716602		
2131575	1171420	960155	655842	147657	156655		
151737	4700	147037	1890	63283	81863		
191121	4370	186751	12535	23014	151201		
3696221	27192	3669029	1862321	306216	1500491		
152210	3800	148410	11115	25380	111915		
67271	1655	65616	4396	12356	48864		
9046386	1272721	7773664	2711056	1061412	4001195		*

*

()

%14.1

%30.0

%55.9

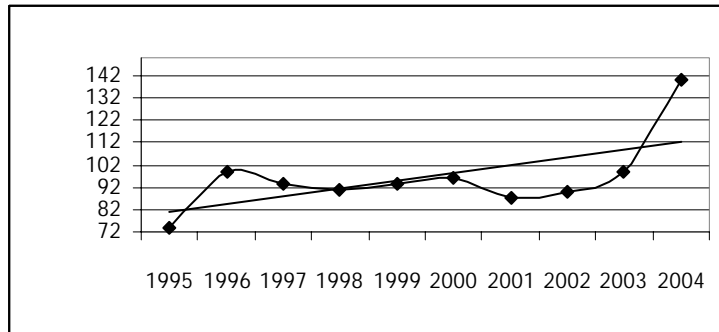
5

3-3-4

%19

2005 %14.10 2002
 %81 %1 2005
 %17 %16 %11 %20
 2004 - 2002
 2005 140.157
 .2003 100

:3
 () 2004-1995



. :
 2003 %9.5 2005 %10.6
 .%14 1995
 %61.4
 2002 2002 %74.3 2000
 2002 %25.7 .2000 %39.6
 %73.4
 2002-2000
 2002 %48.4 2000 %27.9
 %9.6 %11.0
 %11.6 %14.8

- 2003

2005

%16

%13

2002

2004

2005

%2

:

%40 - %35

40

2005

%51

.2002

20493

38388

.2004

%6.8

.
%3.4

2003

115

.2003

81

18

30-20

22

26

.2003

:6

2003	1998	
%36.2	%19.8	
%29.8	%25.6	
%35.5	%20.3	

. 2003

4-4

2003

)

.(

2003

114,998 2004

) %17

17,998

.(

()

274.3

2003

/ 193

2002

215

2003 %32

.2003

.(%38.1) 2002

36.4) 2003

103

2002

126

.(%

16.5 2003

258

2002

309

38 32

%

%.18.8

-

-

2004

.
2005/7/7
%35 %65 393839
%62 354073

. %38
%48 %52 51286

6
) 2005 - 2004
(
64916
) () 59320337
.(

(3 - -) 2004
%50
120

- 6
416364 -
%17

%19 %81
%25

%10

%48

%43

%52

%57

%50

- -

-5

1-5

:

2000

:

◇

4

◇

◇

5

.2000

.2000

4

5

1994

23

1996

%8.7

:

2005 -2000

:

" "

:

:

:

- -

:

:

✧

✧

✧

6

2005

10

✧

)

(...

/

:

" " - -

:

.() - -

- - .2001

%50

%60

!

:

%1

%0.05

:

- -

:

:

2-5

◇

"

”

” ” ✧

✧

2006

✧

()

()

✧

3

✧

2006

◇

◇

2004-2000 .

.2000 . -

.2002 . :2002

" "

UNDP .2002

- 2002 -

.2002

.2002 . / .2002

(2004)

.1999 .

.2000 18 :

.1999

.2003

.199. -

1996 . :

(1)

.1997 .

.2002 .

.1998 .

.1997 .

.1995

.1997

.2001 .

.1998 . -

.2004

.2002

(2000-1995)

.2002 2 14

:

.2001 . -

.2000 . -

.1999

:

.1997 .

- .1997

.2000

1990 " " .108 .1990

.()

.2002 . -

.2000 . - 3

.2000 . - 6

.2000-1994 . -

.1996 :

.2002

.2001 . -

.2002 .

.2001 . - :

.2005

.2000 .

: .

.1999 .()

" .1997

- .1997 . : "
- Abed, G. et al. West Bank and Gaza Strip: Consolidating Improvements of Fiscal Administration. Washington, DC: IMF. 1995.
- Anand, S. and Kanbur, S.M. Inequality and Development: A Critique. *Journal of Development Economics* 41: 19-43. 1993.
- Blejer, M. and A. Cheasty. Analytical and Methodological Issues in the Measurement of Fiscal Deficits. IMF Working Paper. Washington, DC: international Monetary Fund. Fiscal Affairs Department. 1990.
- Budlender, D., and othersm 2002, Gender Budgets Make Cents: Understanding Gender-Responsive Budgets, Gender Affairs Department (London: Commonwealth Secretariat).
- Budlender D. and N. Ngwira (1999). Possibilities for a Gender Analysis of Malawi Government Budget, CIDA-Malawi.
- Budlender, D., R. Sharp, and K. Allen, 1998, How to do a Gender-Sensitive Budget Analysis: Contemporary research and Practice (London: AusAID; Commonwealth Secretariat).
- Cagatay, Nilufer et al. Budgets As If People Mattered: Democratization Macroeconomic Policies. UNDP/SEPED Conference Paper Series. May 2000.
- Cagatay, N., Keklik, M., Lal, R., Lang, J. (2000). "Budgets as if People Mattered: Democratizing Macroeconomic Policies," SEPED Conference Paper #4.
- Casanegra de Jaantscher, M. and R. Bird. The Reform of Tax Administration, in Bird and Casanegra. Editors. Improving Tax Administration in Developing Countries. Washington, DC: IMF. 1992.
- Chirwa W. and N. Ngwira (1998). Civil Society Empowerment for Poverty Reduction, CODESRIA, Dakar, Sengal.
- Commonwealth Secretariat, (1999a). "Gender Budget Initiative: Gender-Aware Budget (Expenditure) Statement."
- Davoodi, Hammed. Tax Policy and Policy and Tax Administration Issues in the West Bank and Gazz: The Present and The Future. IMF Working Paper. Washington. DC: International Monetary Fund. Fiscal Affairs Department.
- Diwan, I. And R. Shaban. (eds). Development Under Adversity: The Palestinian Economy in Transition. MAS and the World Bank. 1999.
- Elson, D., "Gender-Responsive Budget Initiatives: Some Key Dimensions and Practical Examples," paper presented at the UNIFEM, OECD, and

- Nordic Council conference "Gender-Responsive Budgeting," Brussels, October.
- Elson, D. and Evers B. (1997). "Concepts and Sources." Gender Aware Country Economic Reports Working Paper No. 1, GENECON Unit, Graduate School of Social Sciences, University of Manchester, July.
- Elson, D. (1999). Gender Budget Initiative. Background papers, June.
- Hamed, O. and R. A. Shaban. "One Sided Customs and Monetary Union: The case of the West Bank and Gaza Strip, Under Israel Occupation" in Stanley Fisher, D. Rodrik and E. Tuma (eds.), *The Economic of Middle East Peace*. MIT Press, Combridge, MA. 1993.
- ILO. Poverty and Employment in Africa: Issues and Evidence. Recovery and Reconstruction Development. International Labour Office: Geneva. 2001.
- Islam, R. Poverty Alleviation, Employment and Labour Market: Lessons from the Asian Experience and Policies. Paper Presented at the Asia and Pacific Forum on Poverty. Asian Development Bank: Manila. 2001.
- Jagdish Bhagwati. Immiserizing Growth: A Geometric Note. *Review of Economic Studies*, 25. 1985.
- Khan, A. R. Employment Policies for Poverty Reduction. *Issues in Employment and Poverty*, Discussion Paper No. 1. Recovery and Reconstruction Department, International Labour Office: Geneva. 2001.
- Ngwira N. (1999b). Report on Workshop on Budget reform and Civil Society Participation in the Budget Process, October, Harare, Zimbabwe.
- Osmani, S. R. Exploring The Employment Nexus: Topics In Employment And Poverty. Joint ILO-UNDP Programme on Employment and Poverty. May 2002.
- Parry, W. Poulson. *Economic Development: Privat and Public Choice*. West Publishing Co. 1994.
- Raja, Chelliah. Significance of Alternative Concepts of Budger Deficit. IMF Staff Paper. Washington. DC: IMF. 1973.
- Schick, A. (1998). *A Contemporary Approach to Public Expenditure Management*, World Bank Institute.
- Sen, Amartya. Human Development and Financial Conservatism. *World Development* 26 (4). 1998.
- Sloman, John. *Essentials of Economics*. Fifth edition. Prentice Hall. 1998.
- Srinivasan, T. N. Growth and Poverty Alleviation: Lessons from Development Experience. Working Paper No. 17. Asian Development Bank Institute: Tokyo. 2001.
- Stiglitz, Joseph. Towards New Paradigma for Development: Strategies, Policies and Processes. Prebisch Lecture. UNCTAD: Geneva. 1998.
- Tiwari, A. C. Budgetary Control and Reforms, in Mathur, B. P., editor. *Budgetary Reforms and Expenditure Management in Government*.

- National Institute of Financial Management. New Delhi, India. 1999.
- Todaro, Michael. Economic Development. Fifth edition. Longman House. 1994.
- UNCTAD. The Palestinian Economy: Achievements of The Interim Period and Taska for the future. UNCTAD/GDS/APP/1. 2001.
- UNDP. Human Development Report. N Y: Oxford University Press. 1996.
- _____ Debt and Sustainable Human Development. N Y: Oxford University Press. 1999.
- UNIFEM 2000, UN Inter-Agency Committee on Women and Gender Equality, 2000.
- United Nations, 1995, Beijing Declaration and Platform of Action of the Fourth World Conference on Women (new York).
- World Bank. Long Term Policy Options for the Palestinian Economy. The World Bank Group: Jerusalem. 2002.
- _____ Globalization, Growth and Poverty: Building and Inclusive World Economy. World Bank: Washington, D. C. 2002.

115		2005 – 2002	:1
	/2001		:2
121		2005 /2004 2002	:3
121		2004	:4
	-		:4
122			

2005 – 2002

:1

2005		2004		2003		2002			
								/	
1.41%	127,450	%3.08	192,425	7.11%	362,300	10.79%	490,299		1
0.02%	2,194	%0.04	2,705	0.05%	2,465	0.05%	2,093		2
0.05%	4,749	%0.06	3,960	0.07%	3,165	0.06%	2,695		3
0.62%	56,400	%1.05	65,500	0.06%	15,000	0.00%	0		4
1.07%	97,105	%0.81	50,331	1.08%	41,000	0.95%	43,356		5
0.02%	2,243	%0.04	2,190	0.04%	2,170	0.04%	1,804		6
0.05%	4,331	%0.08	4,890	0.05%	2,981	0.05%	2,259		7
0.01%	846	%0.01	855	0.02%	1,155	0.00%	106		8
0.06%	5,732	%0.10	5,971	0.10%	5,560	0.10%	4,613		9
0.48%	43,550	%0.63	39,310	0.64%	31,500	0.68%	30,832		10
0.14%	12,751	%0.13	8,110	0.08%	4,080	0.08%	3,444		11
0.07%	6,705	%0.12	7,515	0.11%	6,475	0.10%	4,760		12
1.00%	90,137	%1.60	99,893	1.66%	72,665	1.57%	71,319		13

2005		2004		2003		2002			
								/	
0.13%	11,937	%0.21	13,335	0.22%	10,250	0.19%	8,741		14
0.05%	4,187	%0.07	4,520	0.06%	3,090	0.05%	2,367		15
5.14%	464,590	%8.03	501,510	11.07%	563,856	14.72%	668,688		
		%10.53	657,515	4.82%	245,365	1.27%	57,659		16
0.08%	7,450	%0.12	7,250	0.15%	7,810	0.17%	7,501		17
0.31%	27,639	%0.42	26,410	0.37%	19,005	0.45%	20,515		18
0.42%	37,642	%0.66	40,885	0.57%	29,005	0.33%	14,812		19
0.14%	12,785	%0.23	14,100	0.25%	12,800	0.05%	2,426		20
0.27%	24,002	%0.42	25,910	0.42%	21,430	0.43%	19,395		21
0.27%	24,044	%0.37	23,397	0.37%	18,925	0.40%	18,104		22
0.20%	18,165	%0.20	12,225	0.22%	11,060	0.18%	8,050		23
0.07%	5,904	%0.10	6,264	0.08%	4,225	0.08%	3,559		24
22.48%	2,034,022	25.07%	1,880,720						
		%18.85	1,176,500	27.83%	1,417,000	28.89%	1,312,741		25
24.23%	2,191,657	%31.89	1,990,456	35.08%	1,786,625	32.24%	1,464,762		

2005		2004		2003		2002			
								/	
1.03%	92,895	%1.54	96,370	1.58%	80,695	1.83%	83,061		26
%1.12	101,730	%1.82	113,405	1.62%	82,515	1.80%	81,610		27
0.33%	30,000	%0.48	30,000	0.69%	35,000	0.87%	39,395		28
0.03%	2,967	%0.05	2,840	0.05%	2,600	0.02%	975		29
3.25%	294,000	%1.36	85,000	1.36%	69,500	1.46%	66,140		30
0.27%	24,000	%0.32	20,000	0.39%	20,000	0.72%	32,673		31
1.33%	120,181	%1.66	103,590	1.48%	75,370	1.29%	58,510		32
3.32%	300,000	%4.81	300,000	0.98%	50,000	0.76%	34,674		33
12.89%	1,165,800	%0.00		0.00%	0	0.00%	0		34
%23.56	575 131 2	12.04%	751,205	8.16%	415,680	8.74%	397,038		
0.02%	2,059	%0.05	3,110	0.05%	2,765	0.05%	2,098		35
1.36%	123,300	%1.44	89,693	1.24%	63,240	1.15%	52,308		36
0.08%	6,786	%0.09	5,908	0.01%	675	0.01%	300		37
0.22%	19,591	%0.28	17,493	0.23%	11,709	0.21%	9,721		38

2005		2004		2003		2002			
								/	
1.68%	151,737	%1.86	116,204	1.54%	78,389	1.42%	64,427		
0.51%	46,407	%0.81	50,390	0.89%	45,190	0.98%	44,602		39
0.03%	2,796	%0.05	3,070	0.04%	2,175	0.03%	1,202		40
0.05%	4,081	%0.07	4,070	0.07%	3,485	0.04%	1,885		41
0.03%	2,943	%0.05	3,360	0.05%	2,610	0.05%	2,255		42
0.08%	7,390	%0.12	7,629	0.12%	6,250	0.11%	4,822		43
0.07%	6,448	%0.10	6,517	0.21%	10,581	0.21%	9,737		44
0.55%	50,130	%0.82	51,405	0.85%	43,134	0.94%	42,615		45
0.69%	62,820	%1.07	66,798	1.12%	56,965	1.23%	55,781		46
0.09%	8,104	%0.13	8,120	0.13%	6,865	0.14%	6,368		47
2.11%	191,121	%3.23	201,359	3.48%	177,255	3.73%	169,267		
14.10%	1,275,849	%21.62	1,349,460	19.98%	1,017,510	19.23%	873,828		48
7.61%	688,388	%10.55	658,739	9.70%	493,850	8.77%	398,572		49
0.02%	1,960	%0.05	3,155	0.00%		0.00%			51

2005		2004		2003		2002			
								/	
2.54%	229,715	%1.80	112,145	1.74%	88,635	1.55%	70,484		52
		%4.85	302,625	4.98%	253,700	5.28%	240,105		
		%0.60	37,256	0.61%	30,855	0.63%	28,646		53
40,86%	3,696,221	%39.47	2,463,380	37.01%	1,884,550	35.47%	1,611,635		
0.11%	10,293	%0.16	10,019	0.18%	8,915	0.17%	7,856		54
0.18%	16,069	%0.27	17,001	0.28%	14,210	0.27%	12,428		55
0.33%	30,119	%0.51	31,965	0.52%	26,310	0.54%	24,673		56
0.46%	41,638	%0.79	49,295	0.86%	43,870	0.88%	40,062		57
0.10%	9,097	%0.15	9,546	0.16%	8,190	0.15%	6,899		58
0.19%	17,318	%0.29	17,845	0.30%	15,257	0.32%	14,677		59
0.02%	1,635	%0.02	1,401	0.03%	1,295	0.02%	1,038		60
0.14%	12,726	%0.23	14,209	0.23%	11,475	0.23%	10,651		
0.08%	7,580								61
		%2.42	151,281	2.54%	129,522	2.60%	118,284		

2005		2004		2003		2002			
								/	
0.48%	43,401	%0.67	42,095	0.72%	36,560	0.69%	31,193		62
0.26%	23,870	%0.39	24,103	0.39%	20,040	0.40%	17,981		63
0.74%	67,271	%1.06	66,198	1.11%	56,600	1.08%	49,174		
100.00%	9,046,386	%100	6,241,593	100.00%	5,092,478	100.00%	4,543,275		
	100,000		846,000		2,075,000		34,128		
	565,000		464,000				317,580		
	9,798,417		7,551,593		7,167,478		4,894,983		
	300,000		56,400		35,300		109,020		
	10,098,417		7,607,993		7,202,778		5,004,003		

:2

2005 /2004 2002/2001

1,845	940	905	33,533	17,452	16,081	2002/2001
2,144	1,097	1,047	38,804	20,994	17,810	2005/2004

:3

2004

Deep Poverty		Poverty Severity		Poverty Gap		Poverty		
Contribution	Value	Contribution	Value	Contribution	Value	Contribution	Value	
100.0	16.4	100.0	3.9	100.0	6.6	100.0	25.6	
92.3	16.5	93.8	4.0	93.1	6.8	93.1	26.0	
7.7	15.0	6.2	2.9	6.9	5.5	6.9	21.0	
100.0	11.6	100.0	2.6	100.0	4.8	100.0	19.8	
92.8	11.8	93.9	2.7	92.8	4.8	92.5	20.1	
7.2	9.4	6.1	1.8	7.2	3.9	7.5	16.8	
100.0	26.0	100.0	6.3	100.0	10.4	100.0	37.2	
91.9	25.8	93.6	6.4	93.3	10.5	93.7	37.7	
8.1	28.1	6.4	5.3	6.7	9.3	6.3	31.0	

-

:4

60337	61591	121928					847	-	:
	%3.3								
	%11.4	%6.4							
5548	3455	03/603.02							
	.6777								
			15	-	03/02	-	2761	-	
			.%3.7			%69			
			15	-	%52		36578	-	
			.%13						
				-	%70	-			
			%7			%69	33595	-	
				-					
				-		%25			

		%1	%0.9:	.	2668	-
			%2.3:	%6	70170	-
			0.6	%6	%29	-
			: 1%			
			.%3.6	.%34		
				.%34		
				.%32		
						:
						:

(1) ((1) ((1)	(1)	(1)) (1031	(1)	:
	-			-		(1 (2 (3
	(2	(2	(2	/ / (2	(2	
				/ /		

	(3)	102 (3)	(3)	282 (3)	102 (3)	
	6.6	.		%88.5	.	
				.2004		
				232.6		
				222.9		
				49.4		
						:)

(2004)

